

FEBRUARY 2016

# The First Universalist Society of Hartland

## UNITARIAN UNIVERSALIST

Services & Religious Education Classes, Sundays, 10 am, in the Church

### SUNDAY SERVICE SCHEDULE

#### FEB 07 **The Many Paths of Faith**

Sometimes, people reflecting on the many different paths spiritual devotion takes in our world will say something like, "There are many paths, but we're all climbing the same Mountain." That kind of statement is helpful to many as an effort to seek out the unity amid the clear diversity of religious impulse and practice. But our experience and our beliefs are sometimes so clearly different, and can even be in conflict. So, what if we're not, actually, climbing the same mountain of spirit? What if human nature is more complicated than that? As an opening service in February's worship theme of "The Path" we'll reflect on the nature of our multi-faith understanding, and what it means truly to "walk together in faith." *The collection will benefit WISE of the Upper Valley.*

#### FEB 14 **Union, Communion, and Community**

We regularly affirm that "Love is the doctrine of this church" and we are committed to making it so. But the path of Love is sometimes difficult to find and even harder to follow. For Valentine's Day, some reflections on trying to faithfully follow the path of Love. *The collection will benefit the Newport, NH Nutrition Back Pack Program. Our annual Chocolate Auction will take place following the service.*

#### FEB 21 **What if...?**

What if...we had chosen peace? Led by Don Foster and Chuck Fenton *The collection will benefit the Vermont Peace and Justice Center.*

#### FEB 28 **TBA**

Lay Led Service. *The collection will benefit Vermont Interfaith Power and Light.*



*The painted arrow on the top of our older signboard.*

---

## LOVE IS THE DOCTRINE OF THIS CHURCH

---

**PHYSICAL ADDRESS:** Hartland Four Corners • 8 Brownsville Road, Corner Rte. 12 • Hartland, Vermont

**WEBSITE:** [www.hartlanduu.com](http://www.hartlanduu.com) • **E-MAIL:** [hartlanduu@vermontel.net](mailto:hartlanduu@vermontel.net) • **PHONE:** 802-436-2592

**MAILING ADDRESS:** P.O. Box 75 • Hartland Four Corners, VT 05049

---

# FROM YOUR MINISTER

---

PAUL S. SAWYER

FEBRUARY 2016

Thoughts on "The Path"

At Chuck Fenton's suggestion, our worship theme for February is "The Path." I'm grateful to Chuck for this idea, and as I have been reflecting on it these past few days, I find I'm drawn again and again to the paths of the many labyrinths that surround me in my office and other places in my life.

As many of you know, the labyrinth has long been a powerful and meaningful spiritual symbol for me, as it has been for countless people of many different faiths for about as long as human beings have been around.

Twenty years ago at a conference on teaching special needs children, I took a workshop on building and using labyrinths as a tool for reflection and mindfulness to use with restless kids. I laugh a bit at the irony, now, of the fact that, in the years since, though I have "used" labyrinths with people of all ages, I think that I am the "restless kid" that has benefitted most from the workshop, and all that I've learned about labyrinths in the years since.

---

**I THINK THAT I AM THE  
"RESTLESS KID" THAT  
HAS BENEFITTED THE MOST**

---

Labyrinths are different from mazes. A maze has many paths, and a clear goal—to get from one place, the entrance, to another, the end. Some of the paths of a maze intentionally don't lead to the goal. The thrill and the challenge of a maze is to figure out the correct path, and to complete the maze.

A labyrinth has just one path, and though most labyrinths do have a defined center of some kind, the center of a labyrinth is not so much a goal to be reached, as one simple place on an ongoing path, which continues as you return to the entrance, to the place you began.

---

**THE CENTER OF A LABYRINTH  
IS NOT SO MUCH A GOAL TO  
BE REACHED, AS ONE SIMPLE  
PLACE ON AN ONGOING  
PATH, WHICH CONTINUES  
AS YOU RETURN TO THE  
ENTRANCE, TO THE PLACE  
YOU BEGAN.**

---

Depending on the style of the labyrinth, the path may meander in very simple or very complex forms, but there are no decisions to be made, just one path to follow, leading from the entrance to the center and back. And even once you've "finished" a labyrinth, it often feels like just the right thing to do to go back through the path again.

It's possible to see the path through life as a maze, with numerous wrong turns and dead ends, and with the "right" way to walk as always

elusive and difficult to find. And it's also possible to see the path through life as a labyrinth, as one long ongoing journey, with twists and turns, but always just moving along, the way it's supposed to, however contorted the present course of the path might seem.

Honestly, depending on the day, the path of life can feel to me like either a labyrinth or a maze, if not both and probably something else completely, all at the same time. Still, I imagine that my own path of life, if I could see it from far above, and from the

*Continued on next page*



## PEOPLE YOU NEED TO KNOW:

*Minister*

**REVEREND PAUL S. SAWYER**

802-299-7530

uupaul@vermontel.net

*Director of Religious Education*

**SAMANTHA CRONIN**

dre@hartlanduu.com

*Music Director*

**PATTY TALBOT**

802-436-2085

pttalbot@comcast.net

*Office Administrator*

**NANCY WALKER**

In the office on Fridays

*Governing Board*

**COLLEEN SPENCE**, President

**DAN POOR** Treasurer

**CORAL LYDON OVITT** Secretary

**LEAH GARTNER**

**SARA MORIN**

**MICHAEL THEROUX**

*Assistant Treasurer*

**NANCY WALKER**

*Trustees*

**JILL CROWLEY**

**DOUG HART**

**ROBERT JAARSMA**

*Newsletter*

**SARA & DAVE MORIN** Layout

newsletter@hartlanduu.org

**LYDIA JOHNSON**

**PHYLLIS TUCKER**

Printing

**CYNTHIA THOMPSON**

**JOAN FARIEL**

Copy Editors

---

# FROM YOUR MINISTER

---

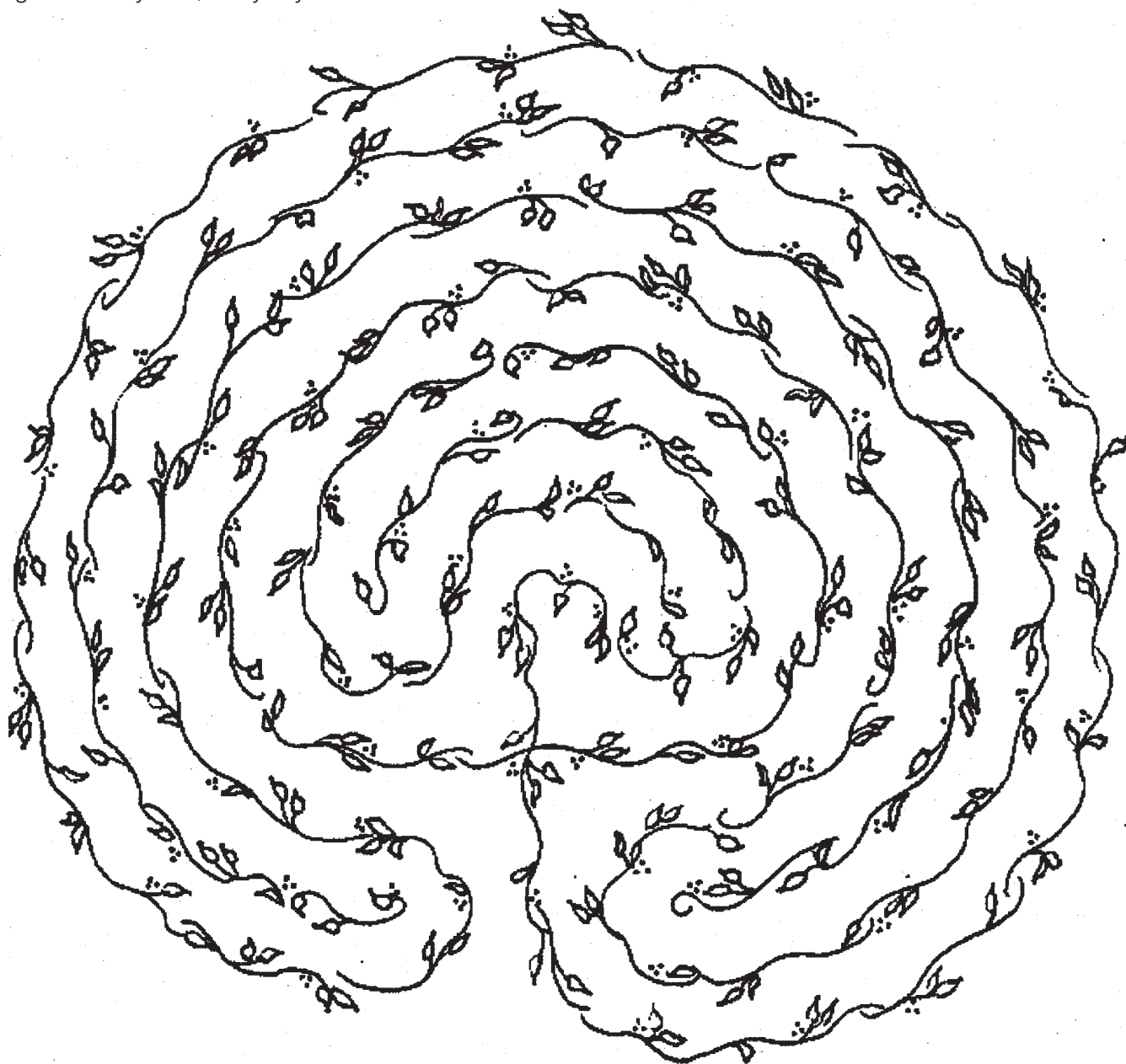
*Continued from previous page*

deepest wisdom of time, would look a lot more like a labyrinth, and probably not even as complicated a labyrinth as as it usually feels in the moment, in my own, more time-driven, less wisdom-grounded mind.

I don't know that there's any huge lesson I'm trying to express in all these thoughts about labyrinths and "the path." Just a reflection on this lovely mid-winter day, as I wonder about dead ends, and the many paths of faith we're walking, together and alone, and a thought that "the path" going on in whatever way it does, may be more important than all the twists and turns and seeming wrong steps that sometimes seem so daunting, and so worthy of regret.

In the labyrinth, wrong paths just aren't really there, and regrets seem less useful, when there's still so much more path to travel along.

This image of a labyrinth made of ivy vines was drawn for me for the cover of my ordination order of service by Marcia Vandermast, a dear friend and former lay leader of the Unitarian Universalist congregation in Plymouth, NH. Marcia has since died, and I miss her dearly, but a copy of her drawing sits above my desk, and reminds me of her amazing spirit, and the path I'm trying to faithfully walk, every day.



# WEEKLY COLLECTION INFORMATION

*We rely on the planned, committed, pledged support of our members and friends to support the needs of our church.*

## WE DEDICATE OUR COLLECTIONS DURING SUNDAY MORNING WORSHIP TO ORGANIZATIONS DOING GOOD WORK IN OUR LOCAL COMMUNITIES OR IN SOCIETY AS A WHOLE.

**To contribute to the collection:** *Cash and checks made out to "FUSH" will be consolidated and passed on to the organization.*

**To make a pledge payment, or a donation to support our congregation's budget:** *Use the box on the welcoming table at the back of the sanctuary, the small manila envelopes available on that same table, or mark "for FUSH" in the memo line of your check.*

**Please contact Paul if you have nominations for organizations you feel would be good choices for our support.**

## FEBRUARY OFFERING RECIPIENTS:

### FEB 07 **WISE of the Upper Valley**

WISE is a non-profit organization which has been serving the needs of the Upper Valley for over forty years. WISE provides advocacy, crisis services, and community education to those affected by domestic and sexual violence and stalking throughout the Upper Valley region of New Hampshire and Vermont. All WISE services are free and confidential. The mission of WISE is to empower victims of domestic and sexual violence and stalking to become safe and self-reliant through crisis intervention and support services. More information is available at [www.wiseoftheuppervalley.org](http://www.wiseoftheuppervalley.org)

### FEB 14 **Newport Food Pantry Backpack Nutrition Program**

The Newport, NH Food Pantry is operated by the Newport Area Association of Churches, and serves people in need across Sullivan County, including residents of Newport and Unity, where a number of members and friends of our congregation reside. Each Friday, their Backpack Program provides backpacks full of nutritious food to school children across the area to take home to provide needed food support for the weekend. This project was nominated for our support by Dianne Rochford, who has worked with the program, and she welcomes you to contact her for more information.

### FEB 21 **The Peace & Justice Center**

Founded in 1979, the Peace & Justice Center is a Vermont-based non-profit organization whose mission is "to create a just and peaceful world." Based in Burlington, they work in all areas of the state through education, advocacy, training, non-violent activism, and community organizing, addressing the interconnected issues of economic and racial justice, peace, and human rights. More information is available at [www.pjcv.org](http://www.pjcv.org)

### FEB 28 **Vermont Interfaith Power and Light**

Vermont Interfaith Power and Light (VTIPL) is a collection of faith communities and individuals working for a faith-based response to global warming. They offer collaboration, education, and inspiration for practical actions and deepening spiritual connections with earth and with the possibility of a resilient future. VTIPL offers a membership program for churches, which requires a commitment to action and responsibility and which we will consider as a future possibility for our congregation. In the meantime, our offering will support their work and help us maintain our connection with this important organization. More information is available at [www.vtipl.org](http://www.vtipl.org).

## 5<sup>TH</sup> PRINCIPLE: THE RIGHT OF CONSCIENCE AND THE USE OF THE DEMOCRATIC PROCESS WITHIN OUR CONGREGATIONS AND IN SOCIETY AT LARGE

The Principles are not dogma or doctrine, but rather a guide for those of us who choose to join and participate in Unitarian Universalist religious communities.

# FOLK CHOIR

Folk choir will be performing during the February 14 service. Practices will be on Sunday, January 31, February 7, and February 14 at 9:15 am in the yurt. All ages and abilities are welcome and encouraged to sing or bring an instrument to play. We will be performing *Lava* from the Disney Pixar short (seen before the recent film *Inside Out*). Anyone who plays, or would like to play ukulele is especially encouraged to join this month, as this is a fun, easy song to learn on the uke.



# ADULT CHOIR

Adult Choir will rehearse at 9:00 a.m. on Sunday, Feb. 14, and Sunday, Feb. 21, to sing in the service on the 21st.

- Patty Talbot



PHOTOS FROM THE YOUTH GROUP'S  
MISSION TRIP FUND RAISER BRUNCH,  
JANUARY 2016



# UNITARIAN UNIVERSALISM 101



SUNDAY, JANUARY 31 • 12:00-2:00 PM

Our minister Paul Sawyer will lead a discussion of Unitarian Universalism theology after the Sunday service. There will be an opportunity for the sharing of spiritual journeys. This is a workshop for people who are new to the Church and who want to explore our faith or who have questions about UU theology. Members and friends who want to learn more about Unitarian Universalism are welcome too. Lunch and childcare provided.

Please RSVP to Sue and David Taylor at [dstaylor342@gmail.com](mailto:dstaylor342@gmail.com) or at 603:675-6566.

It is especially to let us know if child care is needed so we can hire a child care person.

## WE DID IT! A PLEDGE UPDATE

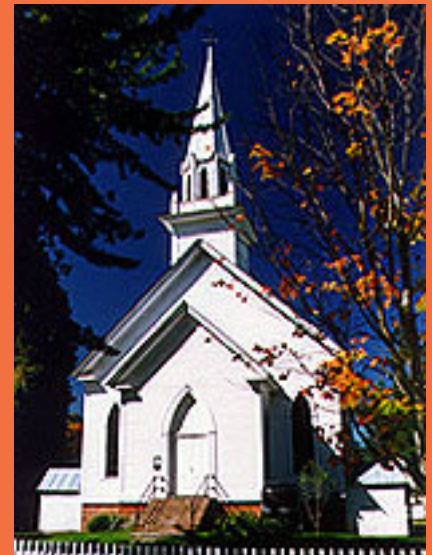
Members, friends...WE DID IT! We've met our pledge goal for 2016. Our Treasurer, Dan Poor, helped us set a pledge goal of \$90,000, based on history, expectations, and hope. We are happy to announce that you, our members and friends, have come together to meet our goal. Through increased pledging and new pledges, we have reached \$90,085.00 in pledges.

**As you know:**

**MORE PLEDGES = LESS MONEY TAKEN FROM THE ENDOWMENT.**

If you have not pledged, we encourage you to add to the celebration. Any amount matters, and every pledge is important.

Many thanks to our pledge committee of Mindi Lane, Ellen Sauer, and Dianne Rochford, who put together a terrific campaign and worked very hard over the last few months to make this pledge season a success. Thanks also go to Nancy Walker and Dan Poor for their help in administering our pledges.



## FUND RAISING NEWS & EVENTS

### OPEN MIC & COFFEE HOUSE

Saturday, February 27 • 6:30 pm • Donations welcome

Come join us for a night of live music & spoken word, coffee and refreshments. All experience levels encouraged to perform. See Dave Morin or Leah Gartner if you'd like to perform, or sign up that evening.

Bring your friends and neighbors! This is a great event and everyone is welcome.



# FUND RAISING NEWS & EVENTS



## OUR 8<sup>TH</sup> LIVE CHOCOLATE AUCTION ON VALENTINES DAY!

Sunday, February 14  
11:15 am in our Fellowship Hall after the worship service

**Don't go to the store to get your sweetheart chocolate!  
Come to the auction & purchase a delectable homemade item.**

If you are willing and able to make a chocolate dessert please drop it off before the church service on February 10.

Include a card for the auctioneer to use with a brief description of the item, the name of the baker & any ingredients that may cause allergies.

Whether you donate a dessert or not, remain after the service to sample the chocolate fondue at coffee hour, join the fun and, of course, bid on as many items as you wish!

Children will have the opportunity to bid on desserts set aside for only them.

For the 2nd year we are also offering a **raffle for a gift certificate worth \$50 to Windsor Station Restaurant.**

The tickets will be on sale during coffee hours up until the Chocolate Auction when the winner will be picked. You don't have to be present to win. Tickets are: \$3 for one or \$15 for 6.

If you are able to help before and/or during the auction please contact Nancy Walker.



Save the date!

## 3<sup>RD</sup> ANNUAL HARTLAND COMMUNITY PROM

Saturday, March 12th

Everyone is welcome to this fun event. Dress up, dress down, wear whatever makes you comfortable.

This event is a fundraiser for our church.

## IF WINTER IS PARTY TIME...

Don't get stuck in the kitchen while your guests have all the fun. Let the Red Aprons take the work out of your party and serve you and your guests like royalty.

### RED APRONS CAN EXPERTLY HANDLE:

Planning • Food & Kitchen management  
Serving • Clean up

Now taking reservations for the Superbowl season  
(802) 738-0255 • [www.hartlanduu.com/redaprons](http://www.hartlanduu.com/redaprons)  
[redapronsuu@gmail.com](mailto:redapronsuu@gmail.com)



All proceeds benefit Hartland Universalist Society

## SHARE YOUR PASSION SILENT AUCTION

Coming this April: the return of the Share Your Passion Silent Auction. This is a chance for you to share an experience, and opportunity, a learning process, an adventure, or something that means a lot to you, something you have a passion for. During our last Share Your Passion auction, bidders won delicious meals, music, food and art instruction, outdoor experiences, specialty trips, party opportunities, and more. Think about what you love the most and how you can spread that joy. Need help framing your passion into something you can share with others? Email [sara.d.morin@dartmouth.edu](mailto:sara.d.morin@dartmouth.edu) for assistance.

We'll put the call out for auction "items" in March. The silent auction will run through the month of April and is a fundraiser for our church.



# YOUTH GROUP NOTES

## YOUTH GROUP SCHEDULE JAN - FEB

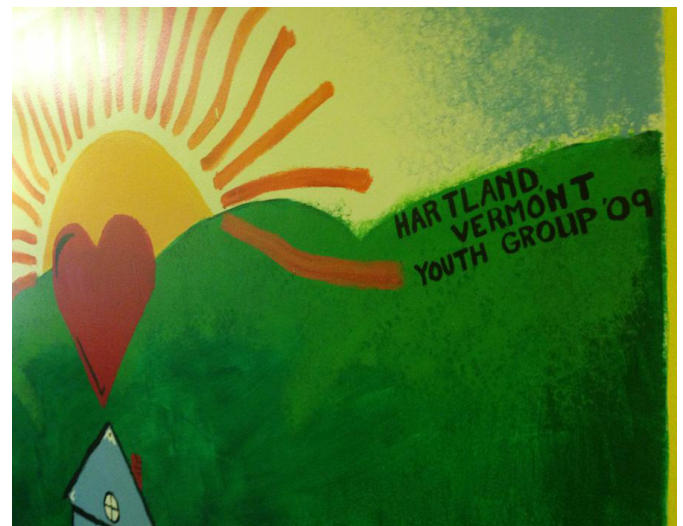
All events are on Sundays unless otherwise noted\*\*

- FEB 7** Junior Youth Group Meeting at the UCC Church  
5:00-6:15 pm
- FEB 7** High School OWL at the UCC Church  
6:30-8:30 pm
- FEB 14** High School OWL at the UCC Church  
6:30-8:00 pm
- FEB 14** High School Game Night at the UCC Church  
8:00-10:00 pm
- FEB 21** Junior Youth Group Meeting at the UCC Church  
5:00-6:15 pm
- FEB 21** High School OWL at the UCC Church  
6:30-8:30 pm
- FEB 28** Mission Trip Fundraiser Brunch at the UCC Church  
9:00 am-1:00 pm
- FEB 28** High School OWL at the UCC Church  
6:30-8:30 pm
- MAR 6** Junior Youth Group Meeting at the UCC Church  
5:00-6:15 pm
- MAR 6** High School OWL at the UCC Church  
6:30-8:30 pm
- MAR 13** High School OWL at the UCC Church  
6:30-8:30 pm
- MAR 20** Mission Trip Fundraiser Brunch at the UU Church  
9:00 am-1:00 pm
- MAR 20** Junior Youth Group Meeting at the UCC Church  
5:00-6:15 pm
- MAR 20** High School OWL—snow day at the UCC Church  
6:30-8:30 pm  
OR regular Senior High Youth Group Meeting,  
6:30-8:00 pm

Our congregation offers activities for youth in grades 7-12 (or the homeschool equivalent) through two youth groups—the **Junior Youth Group, for those in grades 7 & 8**, and the **Senior Youth Group for high school students**. Both groups are offered in conjunction with our friends and neighbors from the Hartland Congregational Church, and are led by the Revs. Lucia Jackson and Paul Sawyer, with dedicated support from David Morin.

Both groups offer fun, fellowship, games, and a youth-centered exploration and development of faith. We gather to support one another, to have a good time, and to think about some of the big questions of life in a safe environment. We have regular meetings with activities, time to check in, reflection, and games. We also offer special events throughout the year including service opportunities, fundraising brunches at both churches, trips to Dartmouth sporting events, game nights, and, for senior youth, our annual week-long mission trip to New Haven, CT in July.

For further information about our youth groups and youth events, please contact Paul or Lucia. To stay in touch with youth group happenings, make sure that Paul and Lucia have your e-mail address, follow the youth group Facebook page, keep an eye on the newsletters and weekly e-mail updates of both churches, or better yet, come to church and read the bulletin!



**SAVE THE DATES: THIS YEAR'S MISSION TRIP WILL TAKE PLACE JULY 24-30, 2016!**

**NOTE: MISSION TRIP COMMITMENT AND \$100 DUE TO LUCIA ON APRIL 3!**

# CONNECTIONS CIRCLE

**CONNECTIONS CIRCLE:** The present members of our circle are: Patti Eckels, Joan Fariel, Debra Hart, Judy Howland, Bineke Oort, and Sue & Dave Taylor. Our next meeting will be on Friday, March 11 at 3:30 in the Parsonage. We want to add a few more people to our circle. If you are interested then just talk to one of our members and we'll have you come to our March meeting.

**COFFEE HOUR:** A big "thank you" to all the people who have worked hard to make sure we have a Coffee Hour after services. We appreciate the efforts of Ricky and Dan Poor; Chris Husmann and Colleen Spence; and Helen and Gary Shapiro for the month of January. They all provided us with delicious snacks! Also, the Youth put on a delicious breakfast on January 17 which was enjoyed by all! Coffee Hour will be hosted by Nancy and Glenn Walker on Feb. 14; by Doug Hart on Feb. 21; and by Sara Doolan on Feb. 28. We need two people for Feb. 7; one person to help Doug Hart on Feb. 21; and one person to help Sara Doolan on Feb. 28. We also appreciate the people who stay to help clean up and wash dishes after the Coffee Hours. Sign up sheets are on the snack table so everyone can volunteer to

work with a partner to be in charge of one Coffee Hour for the remainder of the year. We will send directions to each team the week before and the directions are on the coffee pots and on the wall by the coffee pots. There is always someone to help when you are doing coffee hour for the first time!

**PICTURES OF OUR MEMBERS AND FRIENDS:** Nancy and Glenn Walker have done a terrific job in painting the bulletin board and organizing all the pictures. If you are not on the bulletin board either bring a picture or David Taylor will take your picture so we can include you in our gallery. If you need a name tag you can sign the sheet at the back of the Sanctuary and Cynthia Thompson will make you one.

**CIRCLE DINNERS:** We will be having Circle Dinners in March, April, and May to avoid some of the transportation problems we had last Winter. If you are interested in hosting a Circle Dinner please contact Sue or Dave Taylor at 603:675-6566 or at [dstaylor342@gmail.com](mailto:dstaylor342@gmail.com).



*Friends enjoying conversation during a January coffee hour.*



**MEMBER MELINDA MEYERHOFF SHARES THIS ANNOUNCEMENT & CAN ANSWER QUESTIONS ABOUT:**

## **Haiti: Beyond Just Recovery Interfaith Delegation**

**APRIL 2-9 2016**

Join the Unitarian Universalist College of Social Justice (UUCSJ) on a trip to Haiti, where we will explore themes of international solidarity, peasants' rights, food sovereignty, and sustainable agriculture - as well as work hands-on with our partners at the Papaye Peasant Movement (MPP) in the rural Central Plateau region. Participants will learn first-hand about the impacts of climate change on the global south, the environmental damage caused by decades of colonial exploitation, and the leadership of rural peasant movements in advancing climate justice and global sustainability. In the words of Chavannes Jean-Baptiste, Former Executive Director of MPP, "Peasants are making a new road for humanity."

Over the past three years, UUCSJ has assisted our Haitian partners in building six sustainable eco-villages, which now house families from the refugee camps of Port-au-Prince who lost their homes in the 2010 earthquake. Now, we will be work with members of MPP on their continuing "agroecology" projects such as building tire gardens, making natural insecticides, and helping in the seed nursery.

The full cost of the program is \$1,500 (airfare not included). Financial aid of up to 50% is available based on need and availability.

Find out more on our website: [www.uucsj.org/haiti](http://www.uucsj.org/haiti)

**Register by January 31, 2016**

**ANNOUNCEMENT FROM THE ALASKA UUs:**

## **WhaleCoast Alaska 2016**

**WHAT:** Four Unitarian Universalist Fellowships in Alaska invite you to our unforgettable, 23rd annual Alaska tour program.

**TOUR #1:** National Park Tour  
June 11 to 20 • \$2,879

**TOUR #2:** SOLD OUT



**WHERE:** From the coastal waters to the sunny Interior, from wilderness to modern cities. We experience the best of Alaska: Fairbanks, Denali Park, Anchorage, Juneau, Sitka, Seward

- SEE:**
- Spectacular travel by train and plane.
  - Whales, seals, bears, moose, caribou, & more.
  - Glaciers, islands, fjords, and mountain ranges.
  - Native American artists and dancers.
  - Alaska's finest museums.

**STAY:** Real Alaska! UU homestays, meals, & dinner parties with Alaska UUs who treat you like company.

**CONTACT:**

Dave Frey, director & longtime Fairbanks UU  
[www.WhaleCoastAK.org](http://www.WhaleCoastAK.org) • Phone: 907-322-4966  
 Email: [dfrey@WhaleCoastAK.org](mailto:dfrey@WhaleCoastAK.org)  
 675 Gold Vein Road, Fairbanks, AK 99712

**Deadline: March 1 or until 36 guests register**

---

# FEB 2016 CALENDAR

---

**DEADLINE  
FOR MARCH  
NEWSLETTER  
CONTENT:  
FEBRUARY 18**



## FEBRUARY

05	FRI	8-10 am	Food Shelf
07	SUN	10 am after service 5-6:15 pm 6:30-8:30 pm	Worship Service & RE SoUUpper Sunday SoUUp Sale Junior Youth Group at the UCC Church High School OWL at the UCC Church
08	MON	7 pm	Governing Board Meeting
12	FRI	8-10 am	Food Shelf
14	SUN	10 am after service 6:30-8:00 pm 8:00-10:00 pm	Worship Service & RE Chocolate Auction High School OWL at the UCC Church High School Game Night UCC church
18	THU	all day	Newsletter Content Deadline
19	FRI	8-10 am	Food Shelf
21	SUN	10 am 5-6:15 pm 6:30-8:30 pm	Worship Service & RE Junior Youth Group at the UCC Church High School OWL at the UCC Church
26	FRI	8-10 am	Food Shelf
27	SAT	6:30 pm	Open Mic & Coffee House
28	SUN	10 am after service 6:30-8:30 pm	Worship Service & RE Mission Trip Brunch at UCC Church High School OWL at the UCC Church